



# PETROLEUM 300

## 3" x 2-1/2" End Suction Centrifugal Pump

The Petroleum 300 End Suction Centrifugal Pump is purpose-built to deliver high efficiency and dependable performance when transferring petroleum-based liquids.

This series includes three variants - SO 300, SG 300, and SE 300 - each tailored to meet the requirements of industrial, agricultural, and marine environments.

Designed for compatibility with 215JP and 256JP frame electric motors, these pumps offer versatile installation options, including pedestal setups and PumPAK® assemblies.

Additionally, the pump's rotation can be configured in 90-degree increments, enabling optimal alignment for different system layouts.

The Petroleum 300 Pump is available in three distinct models: SE, SG and SO:

Model SE Pumps - Compatible For Ethanol & E 85

Model SG Pumps - Compatible For Gasoline, Kerosene, Avgas & Jet Fuel

Model SO Pumps - Compatible For BioDiesel, Fuel Oil & Diesel

### SPECIFICATIONS:

|                            |   |
|----------------------------|---|
| <b>Suction / Discharge</b> | 3" x 2-1/2" 150# flange   |
| <b>Flow</b>                | Up to 540 GPM (122.6 m³/h)  |
| <b>Head Feet</b>           | Up to 190' (58 m)   |
| <b>Impeller</b>            | SE 300 - enclosed cast iron<br>SG 300 - enclosed aluminum<br>SO 300 - enclosed cast iron  |
| <b>Motor</b>               | Up to 25 HP (18.38 kW)  |
| <b>Drive Options</b>       | Close coupled 215JP<br>Close coupled 256JP<br>Pedestal<br>PumPAK® (without motor)   |
| <b>Seal</b>                | SE 300 - Type 2 viton/carbon/silicon/carbide/SS<br>SG 300 - Type 2 viton/carbon/silicon carbide/SS<br>SO 300 - Type 21 viton/carbon/niresist/SS |
| <b>Mounting Options</b>    | SE 300 - Explosion proof Class 1 Group D<br>SG 300 - Explosion Proof Class 1 Group D<br>SO 300 - TEFC   |
| <b>Compatible For</b>      | SE 300 - Ethanol, E 85<br>SG 300 - Gasoline, Avgas, Kerosene, Jet A/8<br>SO 300 - Biodiesel, Fuel Oil, Diesel                                   |

### Features

- Non-spark clamp

### Application:

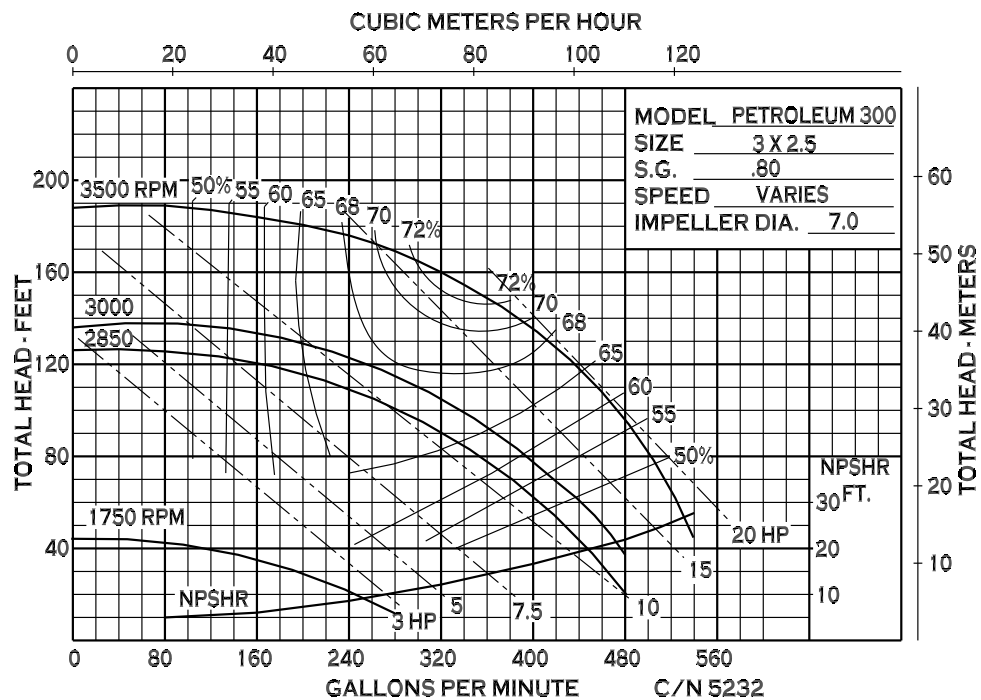
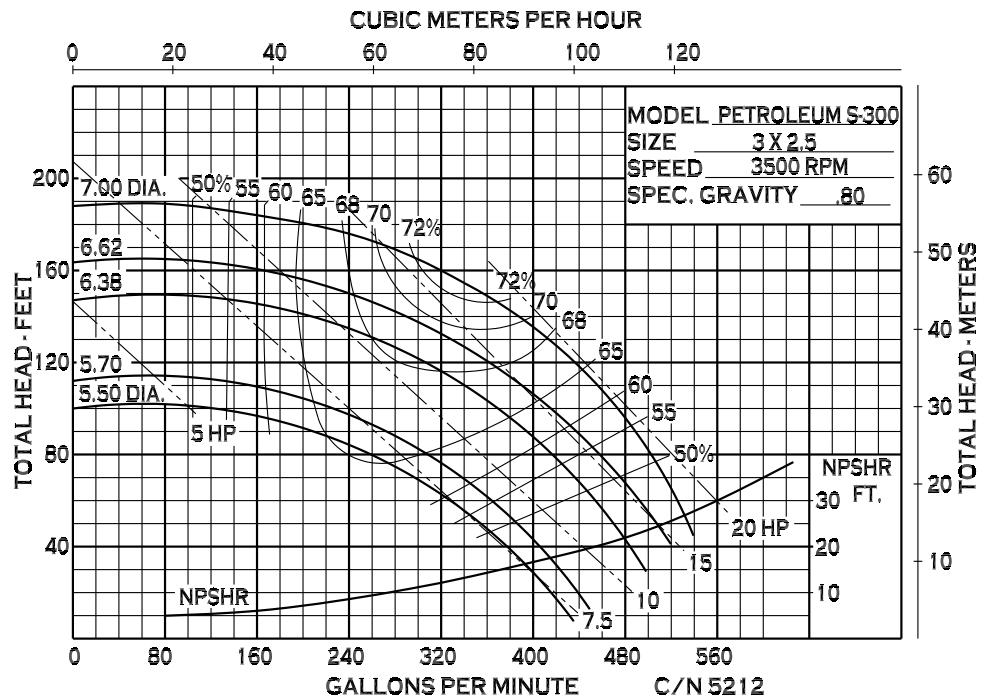
- Agricultural
- Industrial
- Marine
- OEM



An Ingersoll Rand Business

# PETROLEUM 300

## PERFORMANCE CURVES



12500 South Pulaski Road  
Alsip, IL 60803, USA  
Phone (800) 563-8006

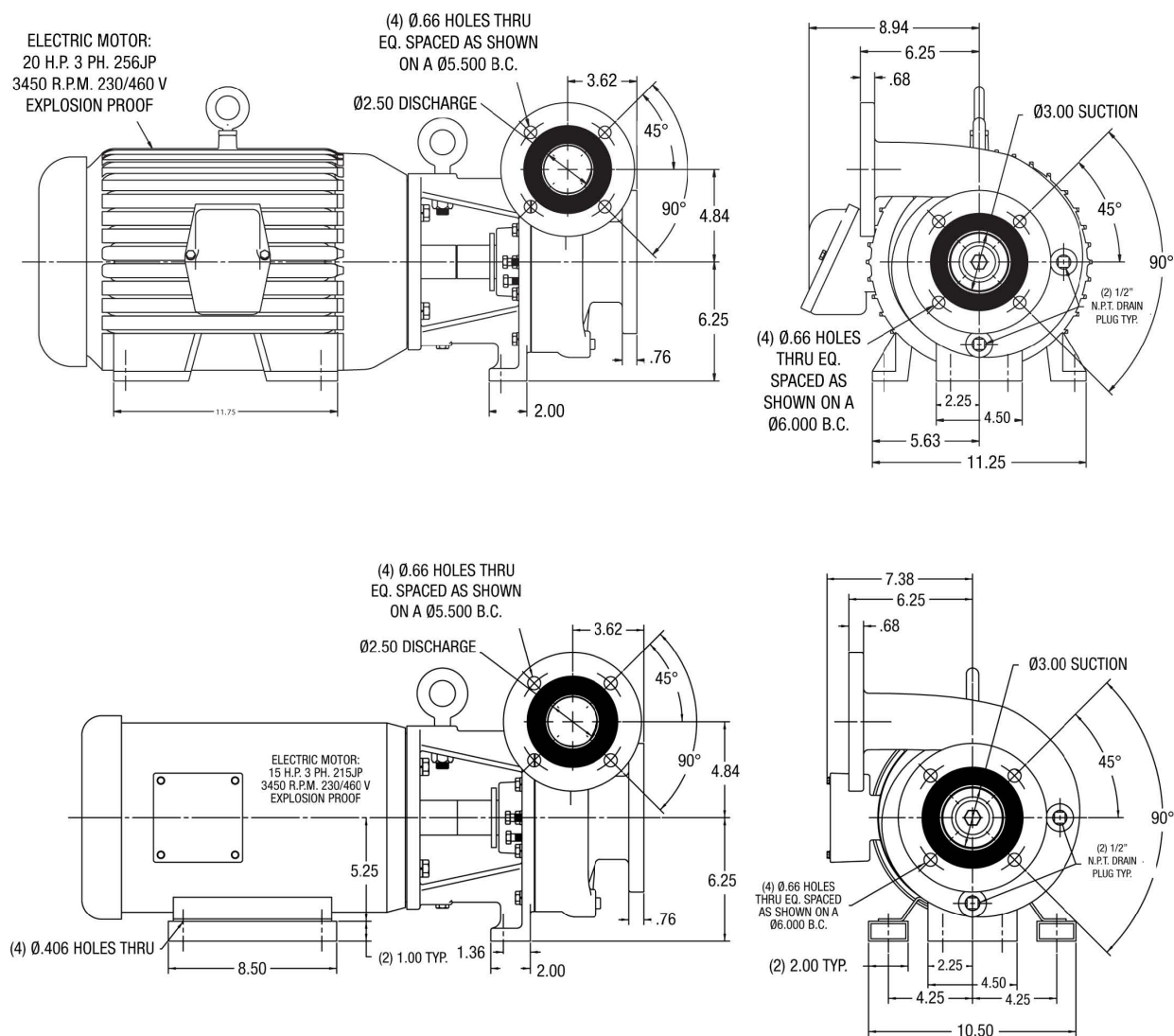


An Ingersoll Rand Business

# PETROLEUM 300

## DIMENSIONS

### CLOSE COUPLED - ELECTRIC MOTOR



\* For complete parts lists and troubleshooting guidance, please refer to the MP Pumps Installation Operation & Maintenance (IOM) Manual.



12500 South Pulaski Road  
Alsip, IL 60803, USA  
Phone (800) 563-8006

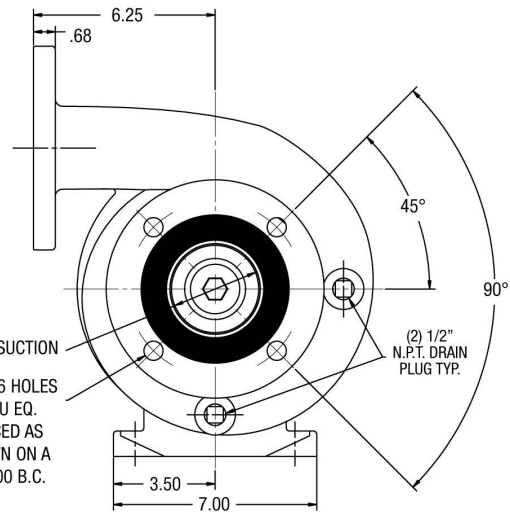
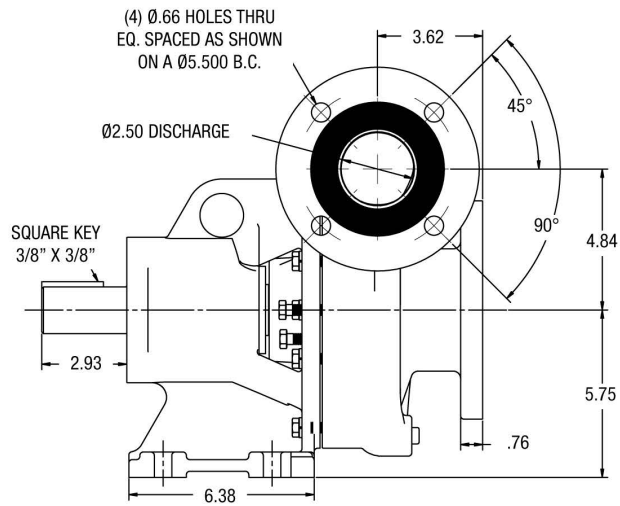


An Ingersoll Rand Business

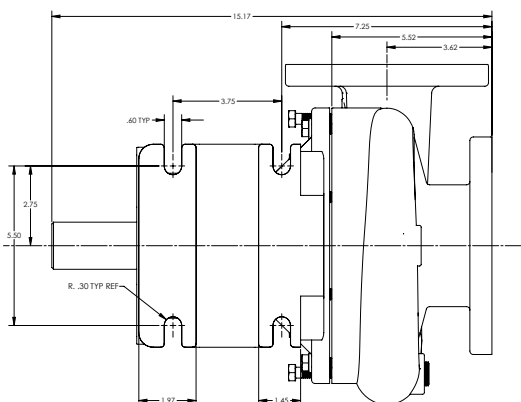
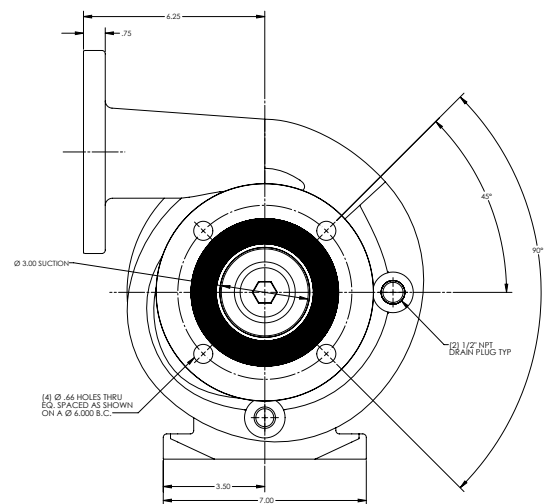
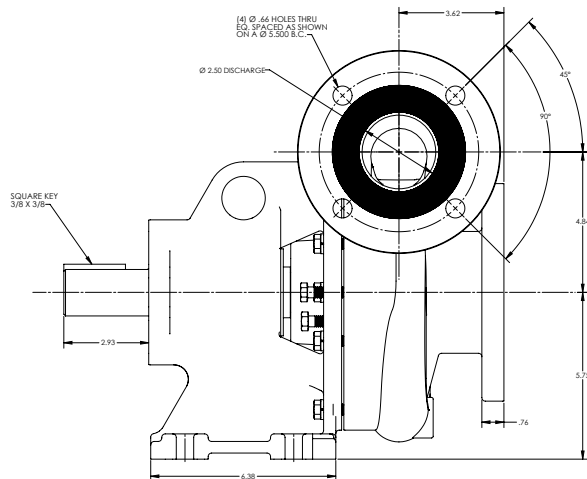
# PETROLEUM 300

## DIMENSIONS

### PEDESTAL - MOUNT



### SG300 PUMP



\* For complete parts lists and troubleshooting guidance, please refer to the MP Pumps Installation Operation & Maintenance (IOM) Manual.



12500 South Pulaski Road  
Alsip, IL 60803, USA  
Phone (800) 563-8006